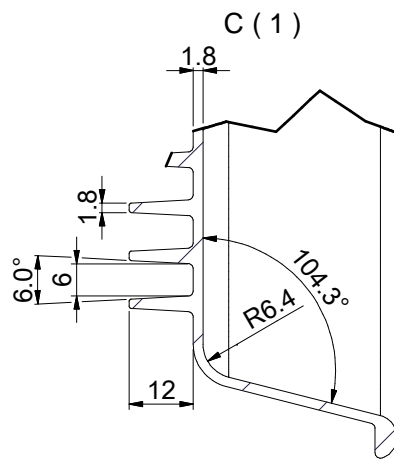
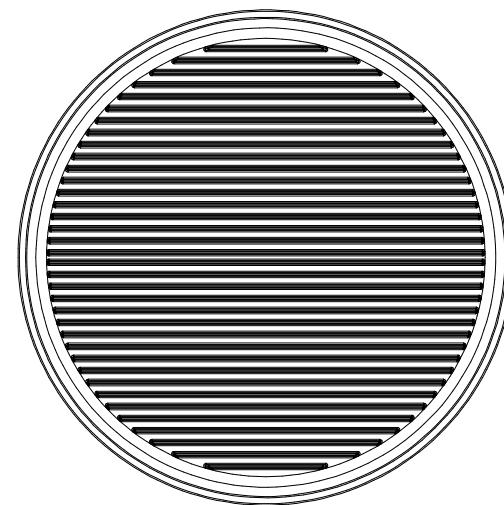
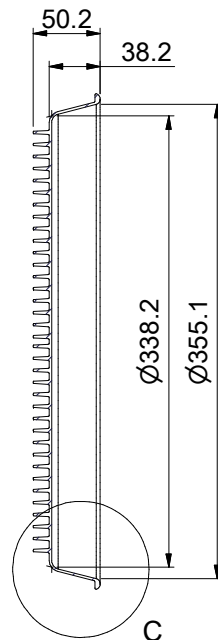


A-A (1 : 4)



- NOTES(技术说明):
1. Remove all sharp edges, No scratch or crack ;
(去除披锋, 不得有刮伤, 裂纹)
 2. Surface treatment : hard anodize,
anodize layer thickness is $10 \sim 15 \mu\text{m}$;
(表面处理: 硬质氧化, 膜后 $10 \sim 15 \mu\text{m}$)
 3. Surface color : gray;
(颜色: 灰色)
 4. Roughness of surface : class N7 standard, $R_a=1.6 \mu\text{m}$
(表面粗糙度 $R_a=1.6 \mu\text{m}$)
 5. Reference net weight : 1.432g;
 6. Unstated tolerance refer to ISO2768-c
as below sheet;
(公差按右侧表, C级公差)
 7. Material : Al Alloy 6063

Unstated tolerances						
Linear: (DIN ISO 2768 T1)						Angular: (DIN 6935)
$>$	\leq	F (fine)	M (medium)	C (coarse)	V (very coarse)	
0.5	3	± 0.05	± 0.1	± 0.2	-	
3	6	± 0.05	± 0.1	± 0.3	± 0.5	$>$ \leq $\pm 2^\circ$
6	30	± 0.1	± 0.2	± 0.5	± 1.0	0° 30° $\pm 2^\circ$
30	120	± 0.15	± 0.3	± 0.8	± 1.5	30° 50° $\pm 1'35''$
120	400	± 0.2	± 0.5	± 1.2	± 2.5	50° 80° $\pm 1'30''$
400	1000	± 0.3	± 0.8	± 2.0	± 4.0	80° 120° $\pm 1'15''$
1000	2000	± 0.5	± 1.2	± 3.0	± 6.0	120° $\pm 2^\circ$

TITLE		DRAWING NO.				
SUB-TITLE		REV.	REV.-DESCRIPTION		BY	PART NO.
DRAWN BY		SCALE	UNIT	LASER	DATE	
DATE		FORMAT A3	LENGTH x WIDTH X		MATERIAL	THICKNESS
						MATERIAL CODE