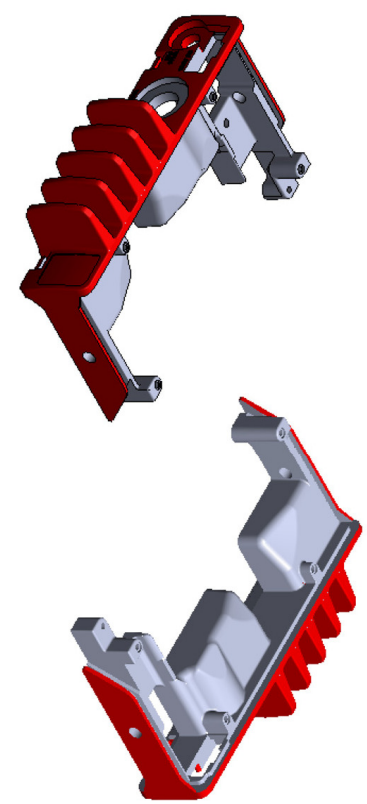
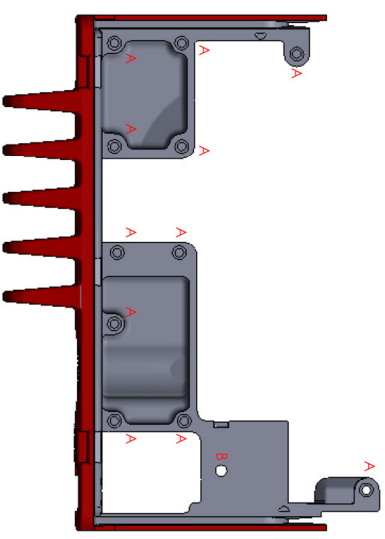
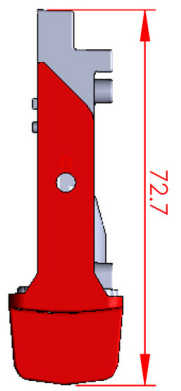
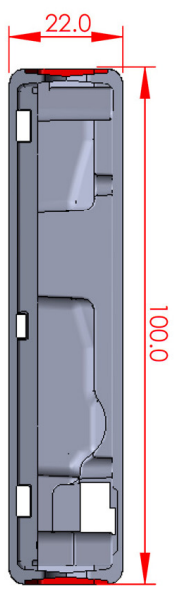
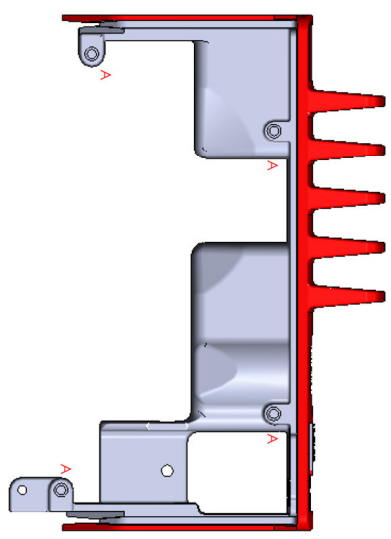
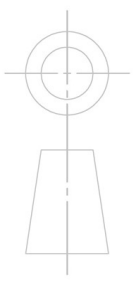


THIS DOCUMENT AND THE INFORMATION CONTAINED HEREIN MAY NOT BE COPIED, USED OR DISCLOSED IN WHOLE OR IN PART EXCEPT WITH PRIOR WRITTEN PERMISSION OF STANDARD COMMUNICATIONS PTY LTD OR IF THIS DOCUMENT HAS BEEN PRODUCED UNDER CONTRACT WITH ANOTHER PARTY, AS EXPRESSLY AUTHORISED UNDER THAT CONTRACT. IT IS SUPPLIED WITHOUT LIABILITY FOR ERRORS OR OMISSIONS.



REF	HOLE DETAIL	REFERENCE	QTY
A	DIA. 1.75mm		15
B	DIA. 2.75mm		1
C	TAPPED M4		2
D	DIA. 5.50mm		1
E	TAPPED 3/8 UNEF		1
F			



DO NOT SCALE

DRAWING TO AUSTRALIAN STANDARD AS1100

UNLESS OTHERWISE STATED
 ALL DIMENSIONS ARE IN MILLIMETRES
 LINEAR TOLERANCE:- WHOLE NUMBERS ±0.5
 DECIMAL NUMBERS ±0.1
 ANGULAR TOLERANCE:- IN DEGREES ±0.5°
 TOLERANCES TO BE NON-CUMULATIVE
 MATERIAL SPEC CONTROLS STOCK TOLERANCE
 LIMITS APPLY AFTER PLATING AND BEFORE PAINTING

REV	ECO No	DETAILS	BY	DATE
AA		RELEASED FOR QUOTATION	DR	17/03/08
AB		RELEASED FOR TOOL MANUFACTURE	DR	26/03/08
AC		RELEASED FOR TOOL MANUFACTURE	DR	04/04/08
AD		MOVE SCREW MOUNTING POST RELEASED FOR TOOL MANUFACTURE	DR	04/04/08
AE		CHANGES FROM Q1S1 EVALUATION RELEASED FOR QUOTATION FOR TOOL MODIFICATION	DR	13/10/08
AF		RELEASED FOR TOOL MODIFICATION	DR	15/10/08
AG		CHANGE TO ANTENNA CONNECTOR C/BORE RELEASED FOR TOOL MODIFICATION	DR	16/10/08
1		RELEASED FOR MANUFACTURE	DR	25/11/08

- NOTES:
1. MATERIAL - DIECAST GRADE ALUMINIUM - ZLD102 OR EQUIVALENT
 2. FINISH - NATURAL / POWDER COAT
 3. COLOUR - FOR THE POWDER COAT SURFACES - SILVER POWDER COAT
 4. ALL DRAFT ANGLES 1.0° MAX UNLESS STATED
 5. PART TO BE FREE FROM FLASH AND MIS-MATCH

DRAWN BY DR	DATE 17/03/08
CHECKED BY	DATE
APPROVED BY	DATE
CONTRACTOR	
CONTRACTOR PART NO	

TITLE DIECAST CHASSIS - TX3100		PART NO 46A0658	SCALE 1:1	DRAWING NO 44133 - 1
NEXT ASSY:		SHEET 1 OF 1	FILE: 44133-1 - Chassis	

A3